

Modulating Minivalve with I/P Positioner

Minimatic Control Valves

2-way modulating or 3-way mixing or diverting compact competitive flow control valves DN15 to DN50 screwed or DN15 to DN40 flanged connections. The Minimatic control valve provides efficient modulating control of liquids, steam, air or gases.



Main Features

- Lightweight for ease of handling
- Compact for when space is limited
- Robust design for minimal maintenance
- All valves incorporate our new “Low Fugitive Emission” maintenance free gland seals
- 2-way or 3-way body configurations
- Cast bronze bodies for pressures up to 16 Bar and 180°C
- Investment cast 316 stainless steel bodies for pressures up to 25 Bar and 180°C
- Pneumatic actuator - spring return
- Trim characteristics - equal percentage for 2-way, linear for 3-way
- Intelligent valve positioner (reverse acting) with IP65 enclosure

Minimatic Proportional Control Valves

Valve Options

2-Way Screwed Fig 74IP Air-Fail-Closed (shown)
 3-Way Screwed Fig 75IP Air-Fail-Top-Seat
 2-Way Flanged Fig 77IP Air-Fail-Closed
 3-Way Flanged Fig 78IP Air-Fail-Top-Seat

Body Material

- Gunmetal
- Stainless Steel*

Trim Material

- Stainless steel
- Stainless Steel

Maximum Working Pressure

- 16 BarG
- 25 BarG

Saturated Steam (Maximum Pressure)

- 9 BarG
- 9 BarG

Maximum Line Temperature

- 180°C
- 180°C

Maximum Air Supply Pressure

- 4 BarG

Positioner Power Supply

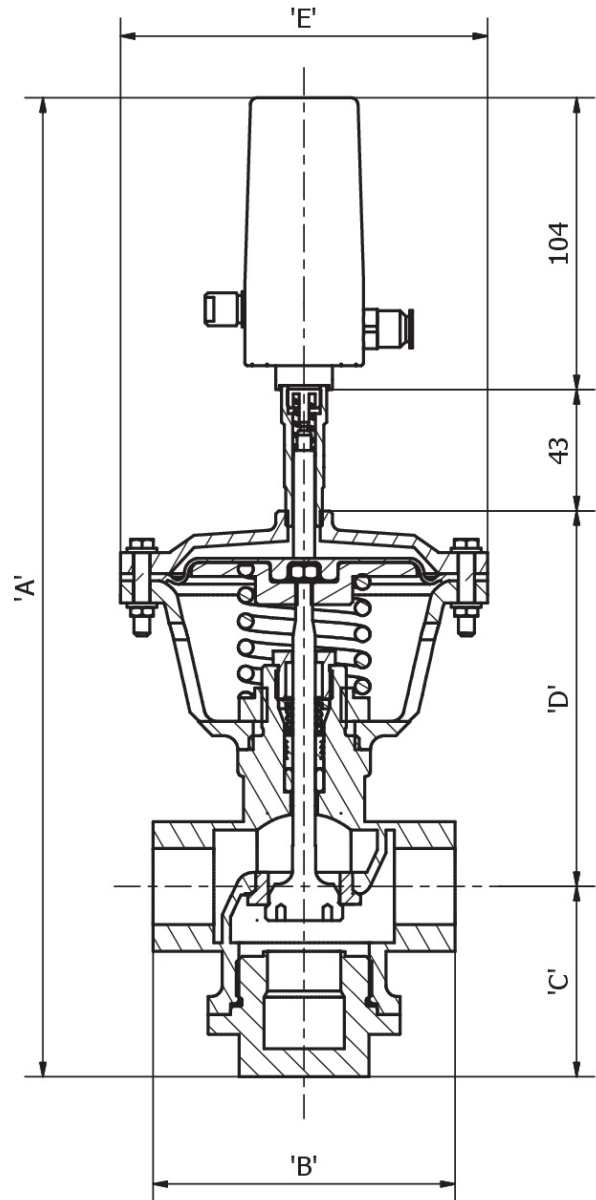
- 24V DC

Positioner Analogue Input

- 4-20 mA (4mA = OPEN : 20mA = CLOSED)

*Stainless steel valves only available in ½", ¾" and 1" screwed BSP versions.

On loss of power valve will fail closed (2-Way) or to top-seat (3-Way).



Screwed Valves Fig 74IP & Fig 75IP

Valve Size	Dimension				
	A	B	C	D	E
½"	323	88	54	122	130
¾"	323	88	54	122	130
1"	347	104	66	134	130
1½"	472	155	99	226	195
2"	477	178	99	230	195

Flanged Valves Fig 77IP & Fig 78IP

Valve Size	Dimension					
	A (2-Way)	A (3-Way)	B	C (2-Way)	C (3-Way)	E
DN15	323	339	152	54	70	130
DN20	323	339	152	54	70	130
DN25	347	357	159	66	76	130
DN40	472	462	165	99	89	195